

COMPLETE SOLUTION
FOR YOUR VERTICAL
ELEVATION....



IVATOR[®]

IVATOR TECHNOLOGIES PVT LTD.

An ISO 9001: 2015 Company

www.ivators.com

Elevator, Advanced Technology, Smooth Start, Quiet Moving

iVATOR VVVF drive ensures Elevator operate more smoothly. Nice noise control brings passenger peaceful riding experience. The start, acceleration, brake curves are designed according to the ergonomic theory in order to get the finest coziness. It is a genuine current vector control variable frequency drive system. The permanent magnetic synchronous drive saves up to 46% in Energy consumption. The professional intelligent group control management system can control 8 elevators. The advanced artificial intelligent and traffic flow database technology increases greatly the traffic efficiency thus minimizes the waiting time.



Integral control system represents the developing orientation of the elevator control system. It is new generation intellectual vector type integral control system. It covers distance control, direct parking, closed-loop vector control technology, CANBUS communication technology, multi-CPU running technology and applies C and assembly language programming. It perfectly combines the contemporary industrial control technology, communication technology and traditional elevator. Compared with the traditional elevator control, it brings about the higher cost performance and the more convenient maintenance.

High Precision Positioning Control System

Car displacement tracking technology ensures the leveling safety. Car-displacement-detection technology with high accuracy makes almost perfect leveling between the car and the landing level.

Top Advanced Door Operator System

iVATOR Elevator applies the advanced VVVF variable voltage and variable frequency control technology to the elevator door operator system so as to ensure the smooth elevator door and quiet switch. What is more, the self-learning door load detector increases the sensitivity of the elevator door switching on/off. It monitors the variation of elevator door load on every floor. Automatically rectifying the most appropriate open / shut speed in every floor so as to guarantee the security and reliability.

Energy Saving Enhance Green Developments

New Generation Of Permanent Magnet Synchronous And Gear-less Traction Machine

iVATOR uses Montanari permanent magnet synchronous and gear-less traction machine. It features as effective energy-saving, compact structure, advantageous properties. And it saves over 40% of energy.



Permanent Magnet Synchronous Gearless Traction Machine

We choose rare earth material and fully combine coaxial transmission technology and digital variable frequency technology with group computer combined control technology. With less running cost & less energy dissipated. Compared with the ordinary and traditional technology, gear-less traction machine can save more than 46% of the energy. Gear-less traction machine needs no renewal of lubricant. Without grease pollution, low noise, quiet & natural.



Energy Re-generation Technology

Converts potential energy during elevator overload or weight loss to high purity electric energy for the supply of other power equipment to prolong service life of elevators and reduce energy consumption by more than 20%.

Group-supervision technology

The system supports a group of 8 elevators, coordinates the dispatch as per group supervision system with universal management, thus enhances the travel efficiency and reduces the energy consumption.



Certificates

We use high quality Italian branded MONTANARI machines for all our passenger elevators and home elevators. We are specialised in providing solutions in traction MRL home lifts which has low pit and low overhead. All the machines, breaking system, safety gears and over speed governor are from Montanari Italian brand with all European Union certification.



Safety And Comfort Enjoy The Cozy Moments

ELEVATOR DOORS

Our standard elevator doors are European brands such as Fermator (Spain) and Wittur (Germany) which are EN 81 certified and 120 mins fire rated. Fermator is a leading European mono-product manufacturer of automatic doors for elevators in the world. Fermator doors are installed worldwide for low, medium and heavy traffic duty lifts, for domestic use, offices, airports, hotels and public buildings.

The automatic doors manufactured by Fermator comply with International Standards; EN 81-20/50, ASME A17.1, GB 7588, and fire requirements EN 81-58 and UL 10 B among numerous others. Door opening width are available from 600mm to 3000mm in 2, 3, 4 & 6 Panel options. Standard available door height is 2000mm and we can provide up-to 3000mm.



Infrared ray light-curtain protection system

The system forms an intensive light-curtain protection net in entry / exit of elevators. It can freely monitor any person/object that enters into exits from the elevator to effectively protect the human safety.



VVVF Variable Frequency And Variable Voltage Door Machine Control System

The system applies AC permanent magnet and VVVF variable frequency door machine control system with free adjustment of opening closing curve, safe and cozy operation, low noise, stable and reliable properties.



Accurate position control system

Such system utilizes the advanced sensor to fulfill real-time feedback and disposal of signals. It fulfills no-error leveling effect with sole and reliable car memory technology. It ensures opening in advance and leveling safety after parking.

PERFECT LIFE, DECORATE OUR HOME WITH TECHNOLOGY

INTELLECTUAL CONTROL

VVVF variable frequency control door machine system can freely adjust door machine running curve with safe operation and stable quality.



NOISE REDUCING

It does not affect good sleep and the rest of your family because of low-noise traction machine design, triple car-wall noise-reducing design, running system noise-decreasing design.

SMOOTH AND COMFORTABLE

Our home elevator is with smooth running system and comfortable speed operational curve, that is slow, soft and smooth start and stop. So it is the most suitable choice for the old-aged people in your family.



FLEXIBLE APPLICATION

Rich and colorful car combination satisfies your plural requirements. It brings a much more free and flexible building space.



Residential elevator offers an Extraordinary life enjoyment for you

iVATOR elevator always strongly believes that science and technology progress each time comes from human grasp. A certain factor in every innovative design to the best explains the meaning of love. About villa elevator, our dream is very simple. We wish you enjoy the world's sweetness and caring in your small and exclusive home.

Individualized luxurious life

Control cabinet is full enclosed without radiation, does not affect family health; Elevator air conditioner improve car environment, quality life, and health factor; Smooth operation system, start and stop is smooth and comfort; 220V household power supply, energy consumption is only equivalent to a refrigerator.

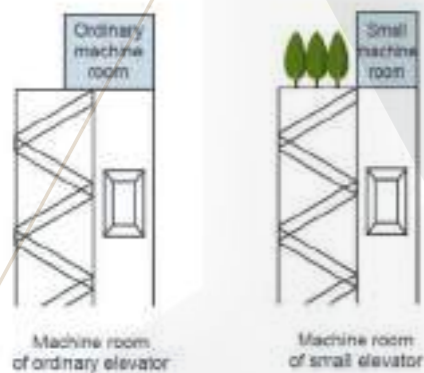
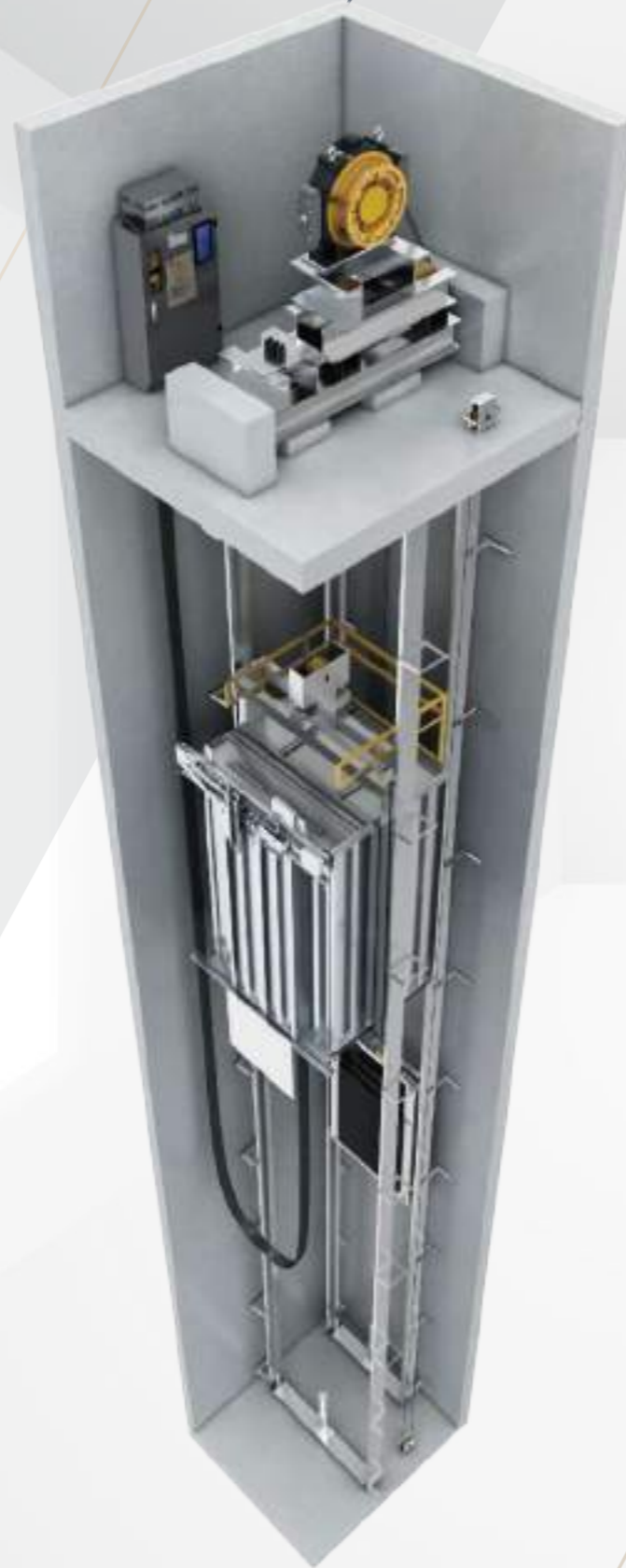
Small Machine Room Passenger Elevator



Saving space and building cost

Compared with ordinary machine room, it saves half of the space. It is convenient for construction layout. Effectively Enhances the utilization rate of the building area.

The minimum requirement for machine room height is 2800 mm, not only reduces over 20% of ordinary machine room height but saves the building cost.



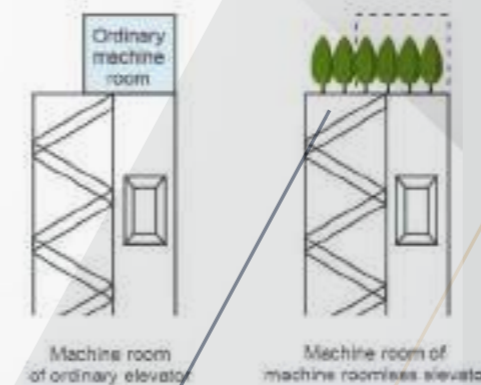
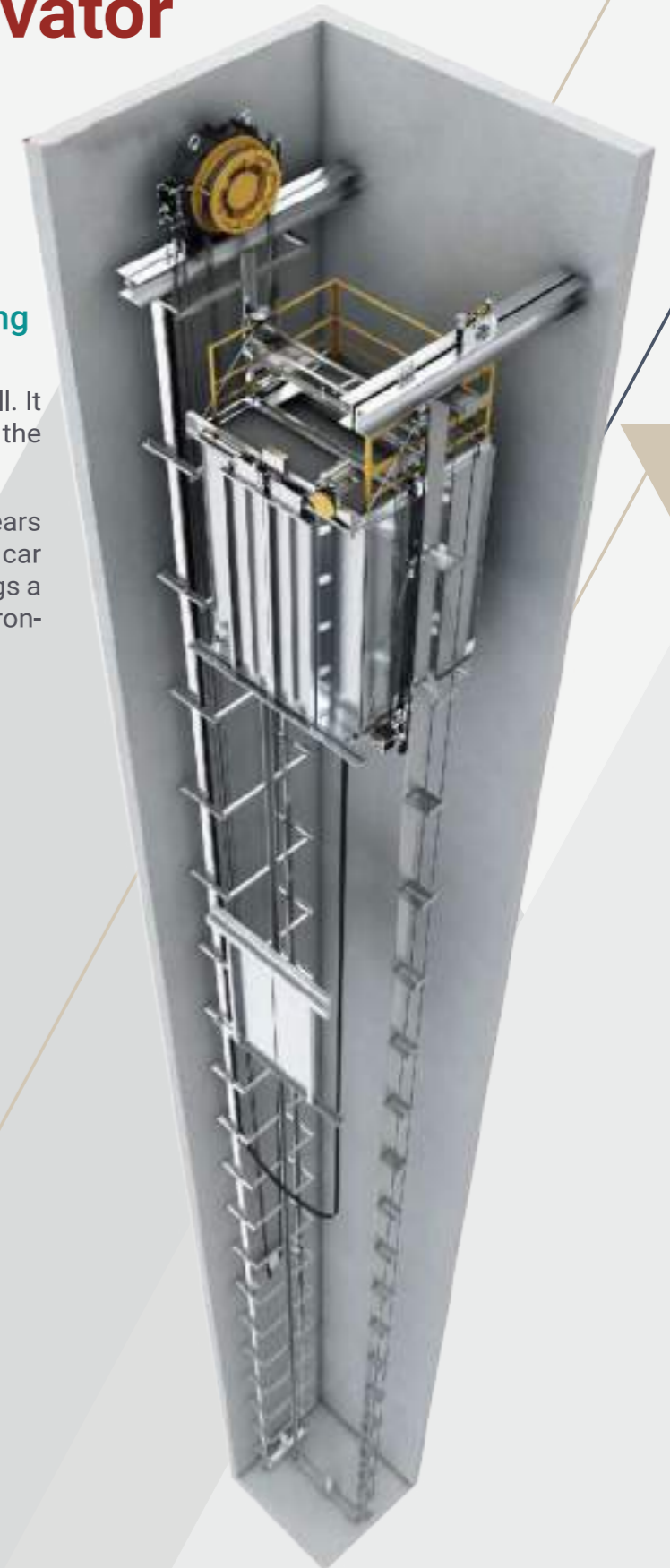
Machine-room-less Passenger elevator



Optimized design, space-creating

Installing machine room parts in the well. It saves the building space and reduces the construction cost.

Car sound-isolating technology appears cozy and peaceful. Double-layer of car effectively reduces machine noise. Brings a more cozy and peaceful travel environment.





Passenger Elevator

Standed Classic



IV-CS01

- Back wall:**
MS Powder coated finish
- Side wall:**
MS Powder coated finish
- Ceiling:**
MS Powder coated finish
- Front wall and header:**
MS Powder coated finish
- Car door:**
MS Powder coated finish
- Floor:**
PVC floor
- Handrail:**
Hairline stainless steel



IV-CS02

- Back wall:**
Hairline stainless steel
Half height glass mirror
- Side wall:**
Hairline stainless steel
- Ceiling:**
Hairline stainless steel
- Front wall and header:**
Hairline stainless steel
- Car door:**
Hairline stainless steel
- Floor:**
PVC floor
- Handrail:**
Hairline stainless steel



IV-CS03

Back wall:
Hairline stainless steel

Side wall:
Hairline stainless steel

Ceiling:
Hairline stainless steel

Front wall and header:
Hairline stainless steel

Car door:
Hairline stainless steel

Floor:
PVC floor

Handrail:
Hairline stainless steel



IV-CS04

Back wall:
Stainless steel hairline, stainless steel mirror

Side wall:
Stainless steel hairline

Ceiling:
Acrylic lighting decoration, stainless steel mirror

Front wall and header:
Hairline stainless steel

Car door:
Stainless steel hairline

Floor:
Standard PVC(optional marble)

Handrail:
Hairline stainless steel



IV-CS05

Back wall:
Hairline stainless steel, Half height glass mirror

Side wall:
Hairline stainless steel

Ceiling:
Hairline stainless steel

Front wall and header:
Hairline stainless steel

Car door:
Hairline stainless steel

Floor:
PVC floor

Handrail:
Hairline stainless steel



IV-CS06

Back wall:
Hairline stainless steel, Mirror stainless steel

Side wall:
Hairline stainless steel, Mirror stainless steel

Ceiling:
Hairline stainless steel

Front wall and header:
Hairline stainless steel

Car door:
Hairline stainless steel

Floor:
PVC floor

Handrail:
Hairline stainless steel



IV-CS07

- Back wall:**
Mirror etching stainless steel,
Hairline stainless steel
- Side wall:**
Mirror etching stainless steel
Hairline stainless steel
- Ceiling:**
Hairline stainless steel
- Front wall and header:**
Hairline stainless steel
- Car door:**
Hairline stainless steel
- Floor:**
PVC floor
- Handrail:**
Hairline stainless steel



IV-CS08

- Back wall:**
Etched mirror & stainless steel hairline
- Side wall:**
Stainless steel hairline
- Ceiling:**
Acrylic lighting decoration,
stainless steel hairline, down lamp
- Front wall and header:**
Stainless steel hairline
- Car door:**
Stainless steel hairline
- Floor:**
Standard PVC (optional marble)
- Handrail:**
Stainless steel flat handrail



IV-CS09

- Back wall:**
Mirror Etched / Hairline stainless steel
- Side wall:**
Mirror Etched / Hairline stainless steel
- Ceiling:**
Hairline stainless steel, Acrylic
- Front wall and header:**
Mirror Etched / Hairline stainless steel
- Car door:**
Mirror Etched / Hairline stainless steel
- Floor:**
PVC floor
- Handrail:**
Hairline stainless steel



IV-CS10

- Back wall:**
Middle Panel Mirror etched stainless steel
- Side wall:**
Hairline stainless steel
- Ceiling:**
Hairline stainless steel
- Front wall and header:**
Hairline stainless steel
- Car door:**
Hairline stainless steel
- Floor:**
PVC / Marble
- Handrail:**
Hairline stainless steel



Passenger Elevator

Luxury Classic



IV-CP01

Back wall:
Mirror stainless steel

Side wall:
Wooden steel

Ceiling:
Hairline stainless steel

Front wall and header:
Hairline stainless steel

Car door:
Hairline stainless steel

Floor:
PVC floor

Handrail:
Hairline stainless steel



IV-CP02

Back wall:
Wood steel & mirror stainless steel

Side wall:
Wood steel & mirror stainless steel

Ceiling:
Mirror stainless steel, LED downlight

Front wall and header:
Wood steel & mirror stainless steel

Car door:
Wood steel & mirror stainless steel

Floor:
PVC floor

Handrail:
Hairline stainless steel



IV-CP03

Back wall:
Mirror stainless steel

Side wall:
Wooden steel

Ceiling:
Hairline stainless steel

Front wall and header:
Hairline stainless steel

Car door:
Hairline stainless steel

Floor:
PVC floor

Handrail:
Hairline stainless steel



IV-CP04

Back wall:
Wood mirror steel

Side wall:
Wood mirror steel

Ceiling:
Mirror stainless steel, LED downlight

Front wall and header:
Wood mirror steel

Car door:
Wood mirror steel

Floor:
PVC floor

Handrail:
Hairline stainless steel



IV-CP05

- Back wall:**
Black glazed glass
Hairline stainless steel frame
- Side wall:**
Wooden steel
- Ceiling:**
Mirror stainless steel
- Front wall and header:**
Hairline stainless steel
- Car door:**
Hairline stainless steel
- Floor:**
PVC floor
- Handrail:**
Hairline stainless steel



IV-CP06

- Back wall:**
Embossed stainless steel,
Mirror stainless steel insert
- Side wall:**
Rose gold hairline stainless steel
- Ceiling:**
Mirror stainless steel
- Front wall and header:**
Rose gold hairline stainless steel
- Car door:**
Rose gold hairline stainless steel
- Floor:**
PVC floor
- Handrail:**
Hairline stainless steel



IV-CP07

- Back wall:**
Bronze hairline stainless steel
Bronze mirror stainless steel
- Side wall:**
Bronze hairline stainless steel
Bronze mirror stainless steel
- Ceiling:**
Bronze mirror stainless steel
- Front wall and header:**
Bronze hairline stainless steel
- Car door:**
Bronze hairline stainless steel
- Floor:**
PVC floor



IV-CP08

- Back wall:**
Rose Gold Mirror stainless steel
- Side wall:**
Rose Gold Mirror stainless steel
- Ceiling:**
Rose Gold Mirror stainless steel
Acrylic, LED lights
- Front wall and header:**
Rose Gold Hairline stainless steel
- Car door:**
Rose Gold Hairline stainless steel
- Floor:**
Artificial marble
- Handrail:**
Hairline stainless steel



IV-CP09

- Back wall:**
Hairline stainless steel, Half height glass mirror
- Side wall:**
Glazed glass
- Ceiling:**
Hairline stainless steel
- Front wall and header:**
Hairline stainless steel
- Car door:**
Hairline stainless steel
- Skirting:**
Hairline stainless steel
- Floor:**
PVC Floor / Marble
- Handrail:**
Hairline stainless steel



IV-CP10

- Back wall:**
Hairline stainless steel,
Half height glass mirror
- Side wall:**
Glazed glass
- Ceiling:**
Hairline stainless steel
- Front wall and header:**
Hairline stainless steel
- Car door:**
Hairline stainless steel
- Skirting:**
Hairline stainless steel
- Floor:**
PVC floor / Marble
- Handrail:**
Hairline stainless steel



IV-CP11

- Back wall:**
Gold hairline stainless steel
Gold mirror stainless steel
- Side wall:**
Gold hairline stainless steel
Gold mirror stainless steel
- Ceiling:**
Gold mirror stainless steel
- Front wall and header:**
Gold hairline stainless steel
- Car door:**
Gold hairline stainless steel
- Skirting:**
Gold hairline stainless steel
- Floor:**
PVC floor / Marble



IV-CP12

- Back wall:**
Champagne Mirror stainless steel
- Side wall:**
Champagne Mirror stainless steel
- Ceiling:**
Champagne stainless steel, Acrylic,
LED lights
- Front wall and header:**
Champagne stainless steel
- Car door:**
Champagne stainless steel
- Skirting:**
Champagne stainless steel
- Floor:**
Artificial Marble
- Handrail:**
Champagne stainless steel



IV-CP13

- Back wall:**
Gold mirror etched stainless steel
Gold hairline stainless steel
- Side wall:**
Gold mirror etched stainless steel
Gold hairline stainless steel
- Ceiling:**
Gold mirror stainless steel
- Front wall and header:**
Gold hairline stainless steel
- Car door:**
Gold hairline stainless steel
- Skirting:**
Gold hairline stainless steel
- Floor:**
PVC floor / Marble



IV-CP14

- Back wall:**
Gold mirror etched stainless steel
Gold hairline stainless steel
- Side wall:**
Gold mirror etched stainless steel
Gold hairline stainless steel
- Ceiling:**
Gold mirror stainless steel
- Front wall and header:**
Gold hairline stainless steel
- Car door:**
Gold hairline stainless steel
- Skirting:**
Gold hairline stainless steel
- Floor:**
PVC floor / Marble



IV-CP15

- Back wall:**
Gold mirror etched stainless steel
Gold hairline stainless steel
- Side wall:**
Gold mirror etched stainless steel
Gold hairline stainless steel
- Ceiling:**
Gold mirror stainless steel
- Front wall and header:**
Gold hairline stainless steel
- Car door:**
Gold hairline stainless steel
- Skirting:**
Gold hairline stainless steel
- Floor:**
PVC floor / Marble



IV-CP16

- Back wall:**
Gold mirror etched stainless steel
Gold hairline stainless steel
- Side wall:**
Gold mirror etched stainless steel
Gold hairline stainless steel
- Ceiling:**
Gold mirror stainless steel
- Front wall and header:**
Gold hairline stainless steel
- Car door:**
Gold hairline stainless steel
- Skirting:**
Gold hairline stainless steel
- Floor:**
PVC floor / Marble



IV-CP17

- Back wall:**
Gold mirror etched stainless steel
Gold hairline stainless steel
- Side wall:**
Gold mirror etched stainless steel
Gold hairline stainless steel
- Ceiling:**
Gold mirror stainless steel
- Front wall and header:**
Gold hairline stainless steel
- Car door:**
Gold hairline stainless steel
- Skirting:**
Gold hairline stainless steel
- Floor:**
PVC floor
- Handrail:**
Gold hairline stainless steel



IV-CP18

- Back wall:**
Gold mirror stainless steel
Gold mirror etched stainless steel
- Side wall:**
Gold mirror stainless steel
Gold mirror etched stainless steel
- Ceiling:**
Gold mirror stainless steel
- Front wall and header:**
Gold hairline stainless steel
- Car door:**
Gold hairline stainless steel
- Skirting:**
Gold hairline stainless steel
- Floor:**
PVC floor
- Handrail:**
Gold hairline stainless steel



IV-CP19

- Back wall:**
Gold mirror stainless steel
Gold mirror etched stainless steel
- Side wall:**
Gold mirror stainless steel
Gold mirror etched stainless steel
- Ceiling:**
Gold mirror stainless steel
- Front wall and header:**
Gold hairline stainless steel
- Car door:**
Gold hairline stainless steel
- Skirting:**
Gold hairline stainless steel
- Floor:**
PVC floor
- Handrail:**
Gold hairline stainless steel





Panoramic Elevator

Style Classic



IV-CG01

- Back wall:**
Tempered glass, Hairline stainless steel frame
- Side wall:**
Tempered glass, Hairline stainless steel frame
- Front wall and header:**
Hairline stainless steel
- Car door:**
Hairline stainless steel
- Ceiling:**
Hairline stainless steel
- Handrail:**
Stainless steel round tube
- Floor:**
PVC floor / Marble



IV-CG02

- Back wall:**
Hairline stainless steel with glass
- Side wall:**
Hairline stainless steel with glass
- Ceiling:**
Hairline stainless steel
- Front wall and header:**
Hairline stainless steel
- Car door:**
Hairline stainless steel with glass
- Floor:**
PVC / Marble
- Handrail:**
Hairline stainless steel



IV-CG03

- Back wall:**
Hairline stainless steel with glass
- Side wall:**
Hairline stainless steel with glass
- Ceiling:**
Hairline stainless steel
- Front wall and header:**
Hairline stainless steel
- Car door:**
Hairline stainless steel with glass
- Floor:**
PVC / Marble
- Handrail:**
Hairline stainless steel



IV-CG04

- Cover:**
Hairline stainless steel, Etched pattern
- Ceiling:**
Hairline stainless steel, White ceiling lamp
LED downlight
- Car wall:**
Hairline stainless steel
- Sightseeing area:**
Laminated Glass 3 pieces
- Handrail:**
Hairline stainless steel
- Floor:**
PVC floor / Marble



Hospital Elevator



IV-CF01

- Back wall:**
Hairline stainless steel
- Side wall:**
Hairline stainless steel
- Ceiling:**
Hairline stainless steel, Acrylic
- Front wall and header:**
Hairline stainless steel
- Car door:**
Hairline stainless steel
- Skirting:**
Hairline stainless steel
- Floor:**
PVC floor

Optional

- Handrail:**
Hairline stainless steel

IV-CF02

- Back wall:**
Embossed stainless steel,
Mirror stainless steel insert
- Side wall:**
Hairline stainless steel
- Front wall and header:**
Hairline stainless steel
- Car door:**
Rose gold hairline stainless steel
- Skirting:**
Hairline stainless steel
- Floor:**
PVC floor
- Handrail:**
Hairline stainless steel



Hospital Elevator

There is strict requirement for bed elevator because of the special environment in the hospital. Focusing on human-oriented design, iVATOR precisely controls elevator traveling speed and attentively makes comfortable space for passengers.

Bed Elevator

Bed elevator often competes with time in vast hospitals, modern medical treatment centers, sanatoriums, medi-care centers etc where healing the wounded and rescuing the dying are the bounden duties. iVATOR bed elevator series adhere to the persistently humane thinking, apply fuzzy logic and group supervision technology from expert system, fulfill the intellectual elevator travel and reduce the patients waiting period to minimum extent.

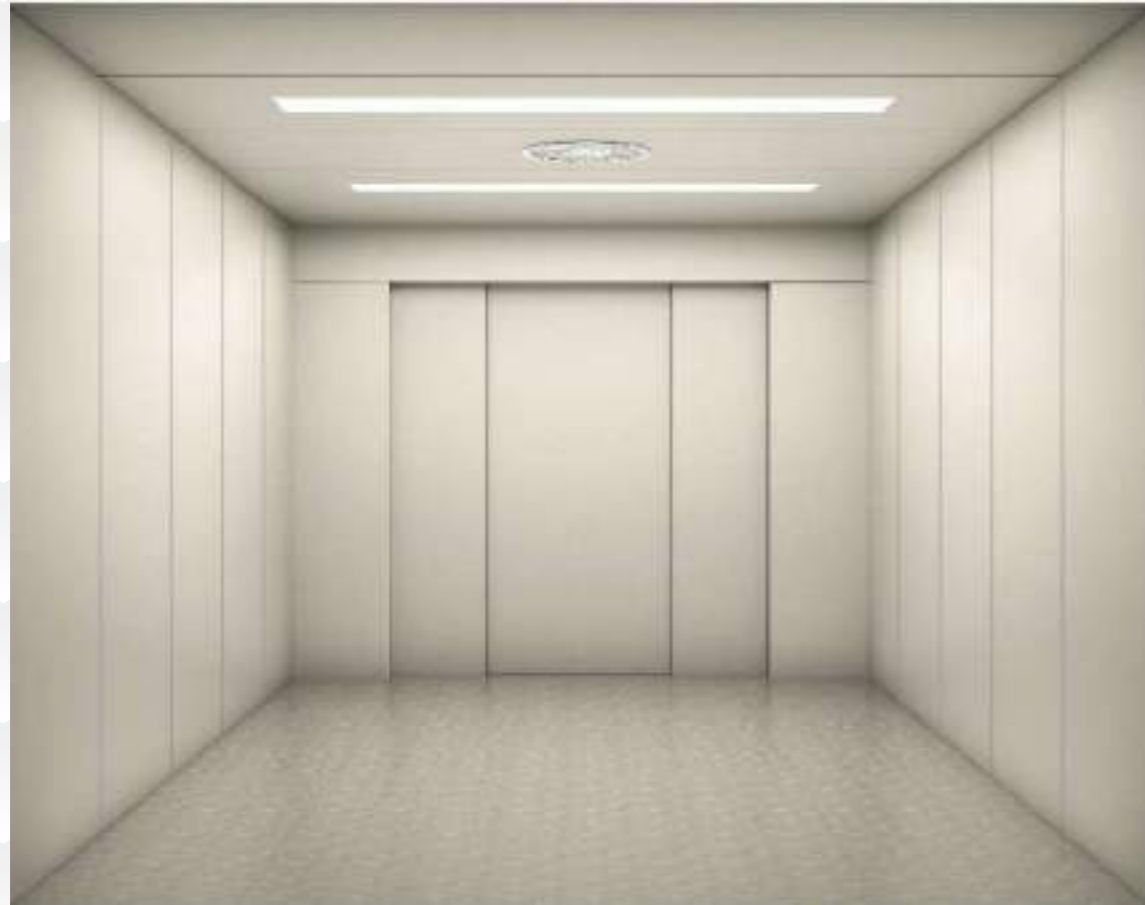
IV-CF03

- Back wall:**
MS Powder coated finish
- Side wall:**
MS Powder coated finish
- Ceiling:**
MS Powder coated finish
- Front wall and header:**
MS Powder coated finish
- Car door:**
MS Powder coated finish



Freight Elevator





Freight Elevator

IV-CF04

Car wall:
MS Powder coated finish

Car roof:
MS Powder coated finish

Floor:
MS Chequered sheet

Car door:
MS Powder coated finish

Standard Paint Colour



RAL 9001



RAL 7032



IV-CF05

Back wall:
MS Powder coated

Side wall:
MS Powder coated

Ceiling:
MS Powder coated

Front wall and header:
MS Powder coated

Car door:
MS Powder coated

Floor:
MS Chequered sheet

Car Elevator





IV-CF06

Back wall:
MS Powder Coated

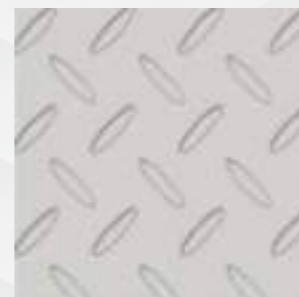
Side wall:
MS Powder Coated

Ceiling:
MS Powder Coated

Front wall and header:
MS Powder Coated

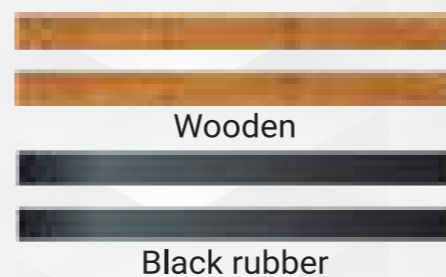
Car door:
MS Powder Coated

Floor Optional



MS Checked steel plate

Optional crash barrier



Wooden

Black rubber



IV-CF07

Back wall:
Stainless steel

Side wall:
Hairline stainless steel

Ceiling:
Hairline stainless steel

Front wall and header:
Hairline stainless steel

Car door:
Hairline stainless steel

Note
Note: Hairline stainless steel refers to short-hair hairline stainless steel

Elevator Doors



IV-LD-01 Material:
Hairline stainless steel



IV-LD-02 Material:
MS Powder Coated



IV-LD-03 Material:
Framed glass door
Big Vision Glass



IV-LD-04 Material:
Frameless glass door
Both ends: Stainless steel
Full Vision Glass



IV-LD-05 Material: Mirror Etched



IV-LD-06 Material: Bronze mirror etched stainless steel



IV-LD-07 Material: Rose gold mirror etched stainless steel



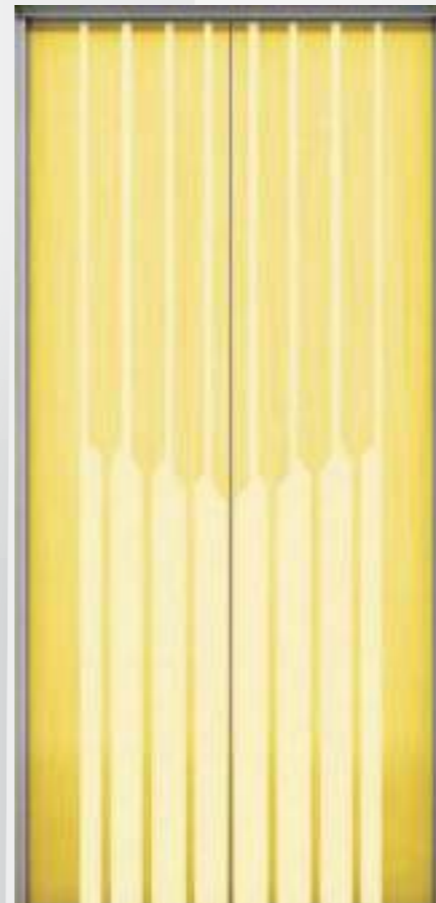
IV-LD-08 Material: Champagne gold mirror etched stainless steel



IV-LD-09 Material: Golden Hairline Stainless Steel



IV-LD-10 Material: Golden mirror etched stainless steel



IV-LD-11 Material: Golden mirror etched stainless steel



IV-LD-12 Material: Golden Mirror etched, Stainless Steel



2 PANEL CENTER OPENING



2 PANEL SIDE OPENING

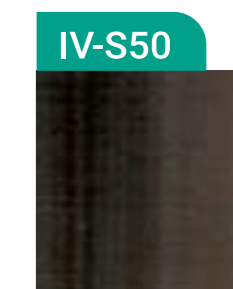
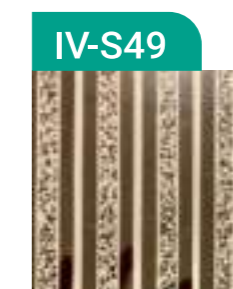
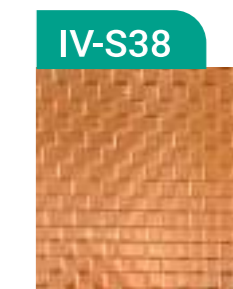
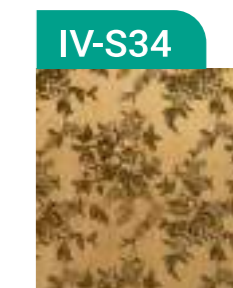
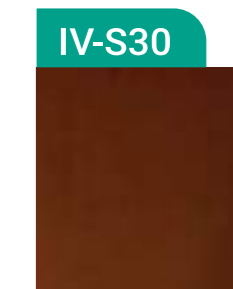
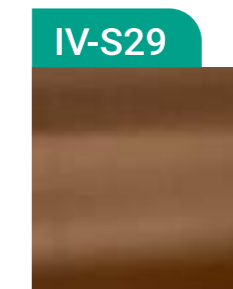
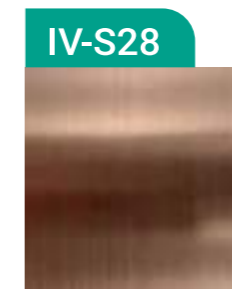
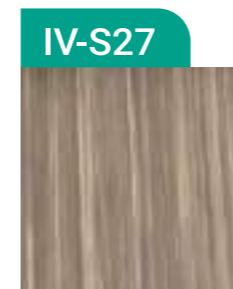
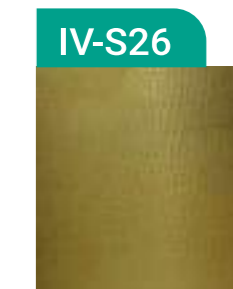
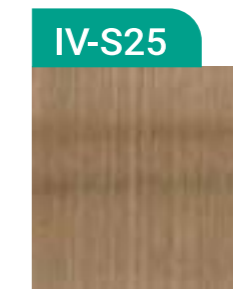
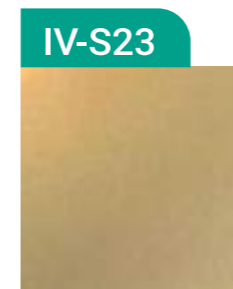
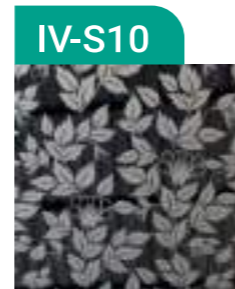
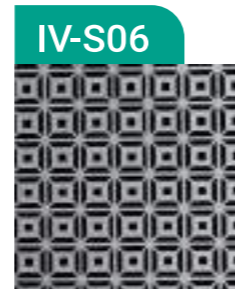
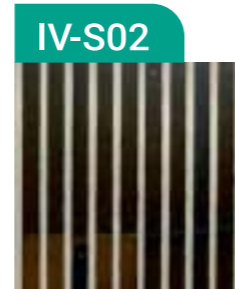


4 PANEL CENTER OPENING



6 PANEL CENTER OPENING

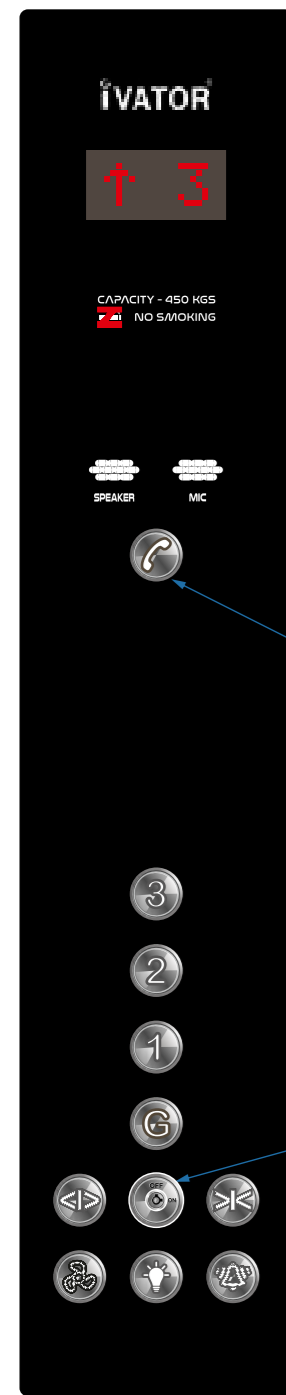
SS SHADE CARDS



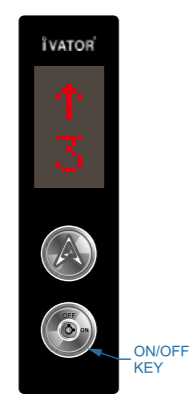


**Elevator
LOP & COP**

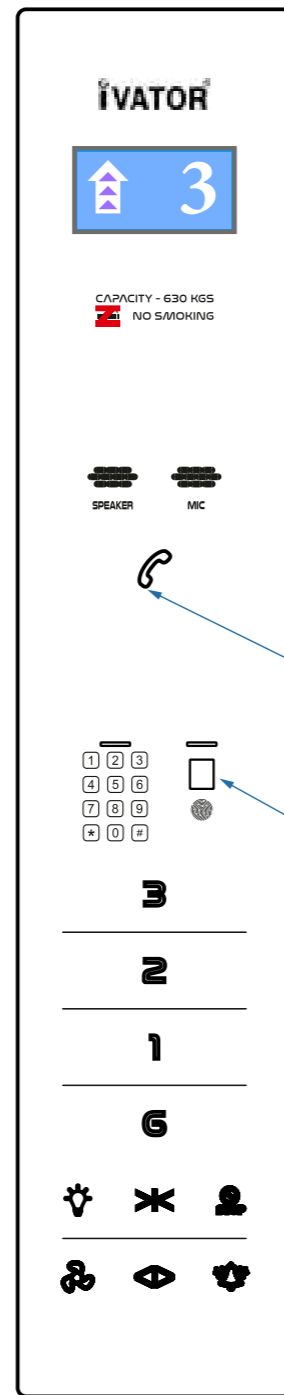
TOUCH LOP & COP



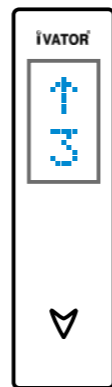
200*1000
COP Button Red Dot Matrix



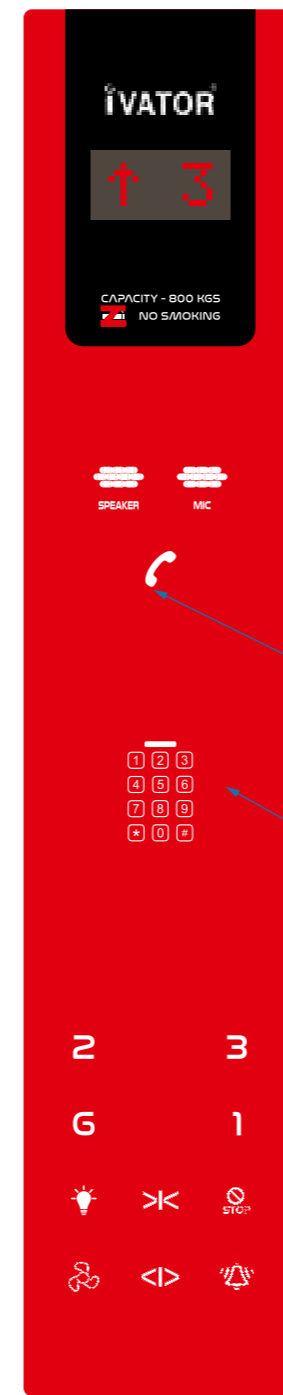
75*275
LOP Button
Red Dot Matrix



200*1000
COP Touch Blue LCD



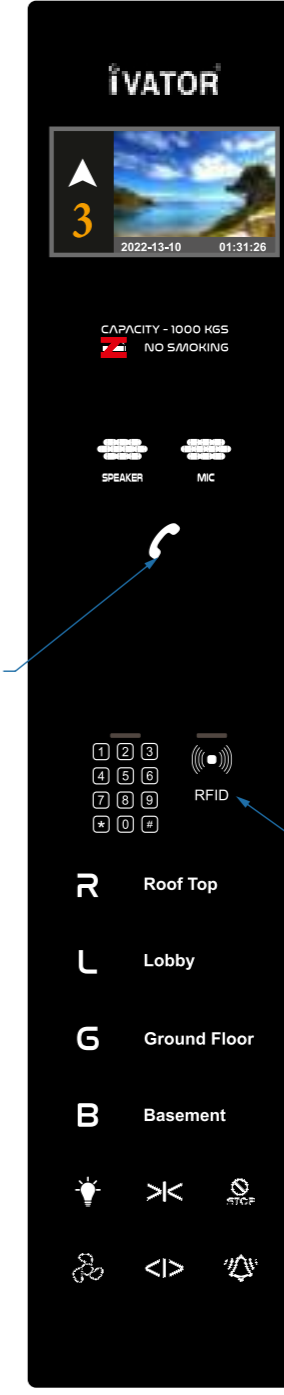
75*275
LOP Touch
Blue Dot Matrix



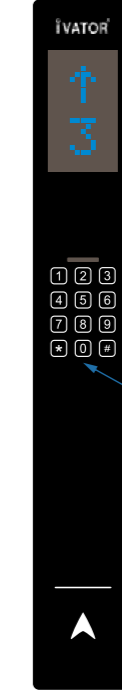
200*1000
COP Touch Red Dot Matrix



75*275
LOP Touch
Red Dot Matrix



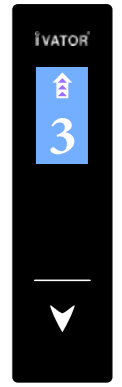
200*1000
COP Touch TFT



75*500
LOP Touch
Blue Dot Matrix



75 x 100



75*275
LOP Touch
Blue LCD



75*150



75*150

OPTIONAL SECURITY FEATURES



Number Lock
Access Card
Fingerprint Lock



iVATOR® provides you premium quality touch COP (Car Operating Panel) LOP (Landing Operating Panel) with great aesthetic look. Available in wall mounted and surface mounted type. Serial / Parallel Dot Matrix/LCD/ TFT/Multimedia displays available with optional security features like Number Lock, RFID access card and Fingerprint Sensor.



Touchless COP and LOP operations.

- Call activation from 20 MM distance.
- It solves the problem of residual bacteria and virus in public equipment.
- No impact of humidity and temperature.



CEILING SERIES



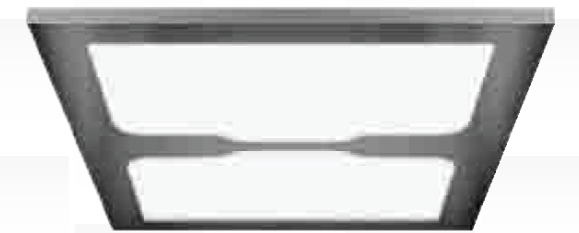
IV-FC01



IV-FC02



IV-FC03



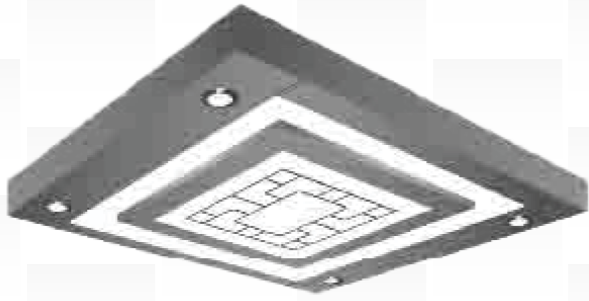
IV-FC04



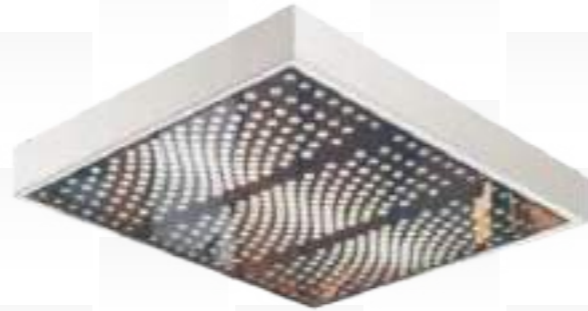
IV-FC05



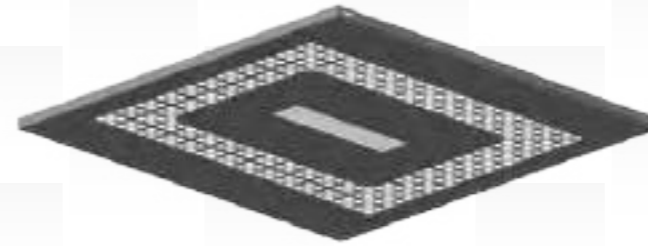
IV-FC06



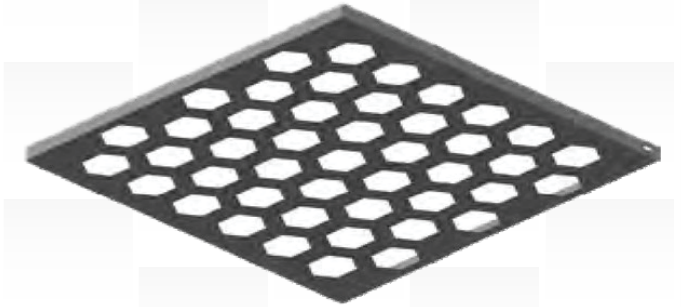
IV-FC07



IV-FC08



IV-FC09



IV-FC10



IV-FC11



IV-FC12



IV-FC13



IV-FC14



IV-FC15



IV-FC16



IV-FC17



IV-FC18

HANDRAIL SERIES



IV-H01



IV-H02



IV-H03



IV-H04



IV-H05

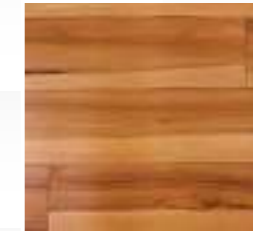


IV-H06

FLOORING SERIES



IV-F01



IV-F02



IV-F03



IV-F04



IV-F05



IV-F06



IV-F07



IV-F08



IV-F09



IV-F10



IV-F11



IV-F12

* Above are PVC Flooring | Marble Flooring Client Scope

NOTE : The artistic drawings contained in this catalog are for illustration purposes only, physical products may vary. Any pictures and words in this book, regardless of their literal means or meaning, will take no responsibility for the purpose and the quality of the product, or any expression and changes in the sales contract. Due to the limitation of printing process, the actual processing color may be slightly different from this volume, and the final shape can be determined according to the actual materials and color samples.

Electrical control unit Specification

Standard function

No.	Function name	Function description
01	All collective selective control	Under the condition of automatic operation or with attendant, during the running process, at the same time of responding the car command signal, it automatically responds up / down calling press-button signal. Passenger at any floor can register up / down calling signal to call the elevator.
02	Inspection running	It is operation function used in inspection or debugging. If it accords with running condition, press up / down press-button, elevator runs upward / downward at inspection speed. Continuously press the button, elevator keeps running. Release the button, it stops right away.
03	Slow self-rescue running	Under the condition of none inspection and not parking at leveling zone, by this time, as long as it accords with starting safety requirements, elevator slowly and automatically runs to leveling zone, opens and releases the passengers.
04	Test running	Function is designed to test or check new elevator. Set certain parameter of integrated machine to test running, elevator runs automatically. Total times of automatic running and interval per each running go through parameter setting.
05	Clock control	System gets real time clock inside. When it records any trouble, it can record specific time of each trouble. In addition, please take this clock as criterion for certain functions relating to time control.
06	Station-exchange parking	If continuous opening exceeds set time, and opening limit does not act, then elevator closes. After closing, it automatically runs to adjacent floor and opens.
07	Cancel error command	Passenger presses command button, it responds. It then finds out that it does not accord with actual requirements. After command register, continuously press error command button twice, it cancels the registered signal. It can be done through parameter setting.
08	Automatically cancel the command in reversal operation	When elevator arrives at the furthest landing, it is going to make reversal operation. It then cancels all the previous registers.
09	Full-load by-pass	Under fully automatic conditions, during full load (usually 80% of load rating), elevator does not responds any pressing calling signal. It only responds the command signal.
10	Home landing	During fully automatic operation, if it is effective setting of automatic home landing function, and there is no command / calling in elevator group, after time-delay (time can go through parameter setting), it then makes automatic home landing.
11	Automatic stop of car fan and lighting in waiting	Under fully automatic conditions, without elevator command and outer calling register exceeds 3 minutes (3min. is default value, time can go through parameter adjustment), it then automatically stops car fan and lighting. After it receives any command or calling signal, it is re-electrified. It can be used again.
12	Free setting of service floor	Through hand operator, it can freely set any parking landings and none parking landings.
13	Attendant operation	Through toggle switch in operation box, it chooses attendant operation. During attendant operation, elevator has no auto-closing function. Elevator closing is executed under the conditions of continuous pressing of closing button by attendant. Meanwhile, it has attendant directional and press-button by-pass functions.
14	Independent running	Independent running means special-purpose running. By this time, elevator does not accept any calling register. It does not close automatically. Operation modes are similar to that of attendant operation.
15	Emergency return running in fire disaster	If fire disaster takes place, press "fire-disaster return switch", elevator then immediately cancels all commands and callings. It runs to fire-fighting home landing as soon as possible. It then opens and stops.
16	Automatic correction of floor position signal	During systematic running, every terminal switch action point and each-floor leveling switch action point correct the elevators' position signal by the position data got during self-tuning.
17	Elevator locking service	Under the conditions of fully automatic running or attendant operation, after it presses locking switch, it then cancels all calling registers. It only responds to car command till none is left. It then returns to home landing. After automatic opening, it shuts off car fan and lighting. It turns on "opening press-button lamp". After 10 second of time-delay, it stops. After reset of locking switch, it starts normal operation.
18	Over-load protection	When over-load switch acts, it does not close and buzzer rings.
19	Running time limiter	During running process, after it continuously runs the stipulated time made by running time limiter (max. 45 second), if leveling switch does not act, it stops then.
20	Trouble protection of reducing switch	If decelerator switch is invalid, elevator makes emergency parking. It prevents it from rushing to top / bottom.
21	Limiter to running time	Up / down terminal installs terminal decelerator switch and terminal limit switch. It ensures that elevator does not exceeds the stroke.
22	Reducing switch trouble protection	After system gets safety loop trouble signal, it makes emergency stop. It prevents from running after it goes wrong.
23	Over-speed protection	It sets protection when speed is out of control and it might lead to safety problem.
24	Leveling switch trouble protection	It takes safety protection in order to prevent leveling switch from going wrong and causing any abnormal conditions.

Standard function

No.	Function name	Function description
25	Well self-tuning failure diagnosis	As well data is proof of control system in fast running, without correct well data, elevator can not operate normally. Therefore, if well self-tuning does not finish correctly, please set well self-tuning failure diagnosis.
26	Protection against brake door-lock in running	If it detects broken door-lock in running, it stops then.
27	Parallel running	After it opens forced closing function, if elevator opens continuously without closing signal because of light-curtain action or other reasons, it then makes forced closing and sends out forced closing signal.
28	Forced closing	After it opens forced closing function, if elevator opens continuously without closing signal because of light-curtain action or other reasons, it then makes forced closing and sends out forced closing signal.
29	Home-landing opening waiting function	Select the elevator through parameter in home landing, open the door and wait for elevator.

Optional function

No.	Function name	Function description
01	Opening in advance	After such optional function is selected, during leveling process each time, when it arrives at "opening zone in advance", it immediately opens in advance. It thus enhances the elevators' running efficiency.
02	Opening re-leveling	If elevator is in high floor, because of wire rope expansion, when passengers enter into / exit from the car, car moves upward / downward. It leads to incorrect leveling. After system detects it, it opens and makes slow leveling.
03	Fireman operation	If fire disaster takes place, press "fireman operation switch", elevator immediately cancels all commands and callings. It turns to fire-fighting home landing. It then enters into fireman operation mode.
04	Group-supervision running	Through group supervision, controller coordinates with various landing calling functions, it thus enhances the running efficiency. It offers peak-hour services, scattered waiting functions etc. System maximally fulfills group supervision of 8 elevators.
05	Residence (or building) monitor	Through CAN communication line, control system connects with PC machine in monitor room. It can monitor elevator floor position, running direction, trouble conditions etc. in PC machine.
06	Earthquake running function	After it matches with earthquake operation function, if earthquake takes place and earthquake detector acts, it gets a contactor signal to input in control system. Control system controls the elevator to make nearby parking. It then opens and releases the passengers.
07	Car arrival gong	During elevators' deceleration leveling process, up / down arrival gong rings in car top / bottom. It reminds the car passengers and waiting ones that it is making leveling. It arrives soon.
08	Host-way arrival pre-announcer lamp	After the optional function is selected, hall in each floor installs up / down arrival pre-announcer lamps. It tells the passengers that elevator arrival soon. Meanwhile, it pre-announces the running directions too.
09	Host-way arrival gong	After the optional function is selected, hall in each floor installs up / down arrival gongs. It tells the passengers that it arrives soon.
10	Front-and-rear door independent control	Passengers can independently operate front / rear door as per requirements with respective opening / closing.
11	Emergency leveling upon power failure	Because of power failure, running car is not in door zone. It traps the passengers. Power failure emergency leveling device starts immediately. It drives the elevator to slowly run to door zone. It opens and releases the passengers.
12	Switch control service floor change-over	Converts the elevator service floor through car switch.
13	Voice announcer function	When system matches with voice arrival function, during every leveling process, voice announcer reports the arriving floor.
14	Weighting compensation	Detects car load data as per weighting device. It gives starting load compensation value. It also improves the cozy start.
15	Opening keeping press-button operation function	Through opening keeping press-button, it offers time-delay closing.
16	Car IC card floor service control	When it matches with such function, car operation box gets a card-reader. Passengers shall take card in order to register the authorized command.
17	Host-way IC card calling service control	When it matches with such function, car operation box gets a card-reader. Passengers shall take card in order to register the floors' calling signal.

Note: Above functional information is not lawful. It is not lawful proof for claim. Users shall be liable and responsible to make sure if the chosen products satisfy the application demands or not. Out of technical progress requirements, we always keep the right to revise any information. As long as catalogue sample-books are issued, it is invalid for previous product manuals.



Enjoyable
Service



WORLD WIDE AFTER SALE

We provide customers with first time response at the first time and prompt replacement parts supply.

24-HOUR EMERGENCY TECHNICAL SERVICES

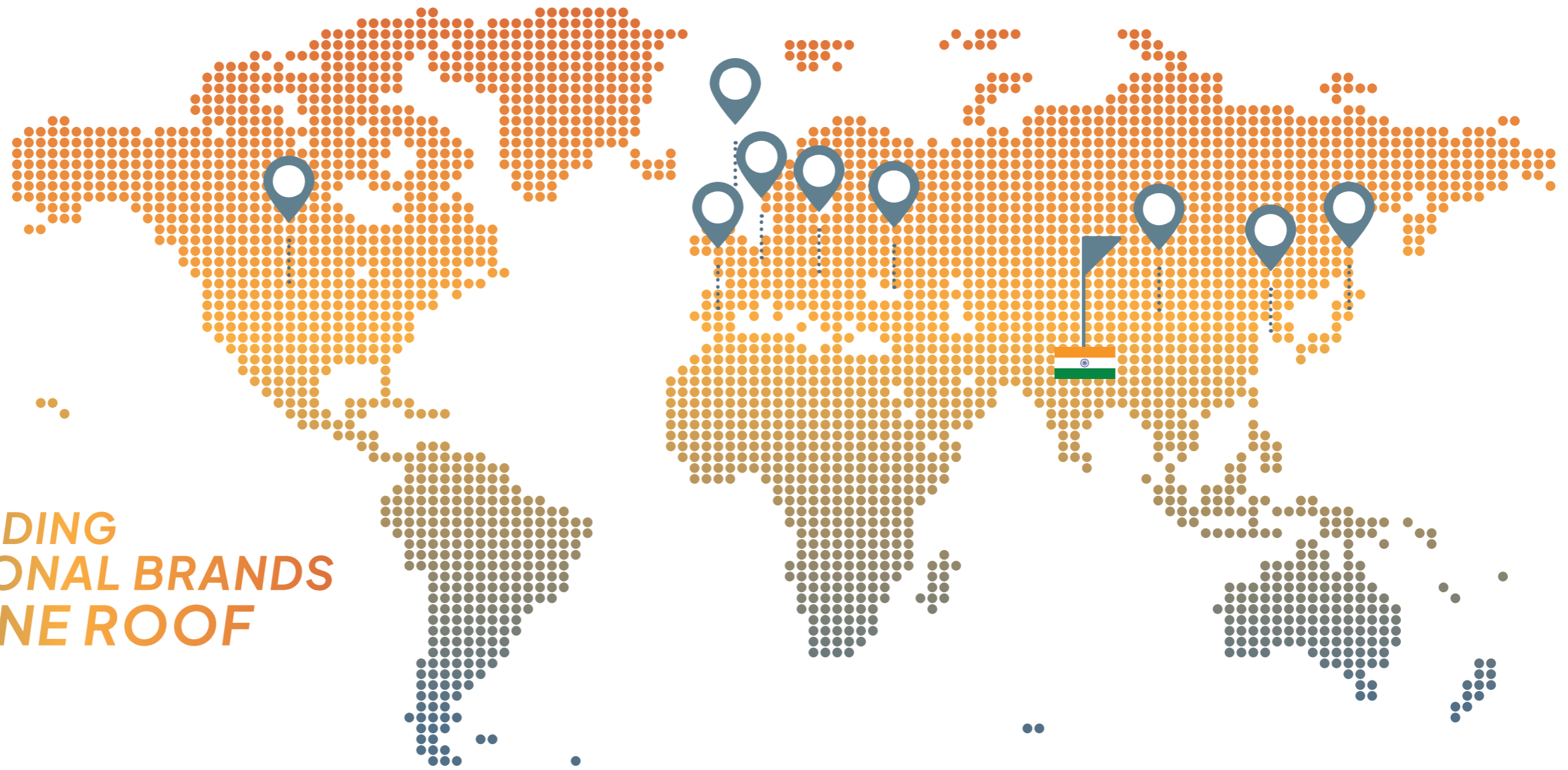
In order to urgently remove the problems, iVATOR specially sets 24-hour customer hotline. We will provide you with aid and service at first time.



FULL SERVICE, HEART-TO-HEART CONNECTION

Our service should not only ensure your security, but also guarantee your investment in the equipment aspects. The true service is to foresee and satisfy the special requirements from vast customers because the service's definition varies according to the customer's demands. Therefore we should have the extensive and characteristic methods to satisfy these requirements.

WORLD LEADING
INTERNATIONAL BRANDS
UNDER ONE ROOF





IVATOR TECHNOLOGIES PVT LTD
AN ISO 9001 : 2015 COMPANY
Building No. E6, office number 4 & 5
Harihar Complex, Dapoda, Mankoli Naka
Mumbai - Nashik Express Highway
Near Indian Corporation, Bhiwandi,
Maharashtra, India 421302

CIN: U29308KL2018PTCO52534
info@ivators.com, info.ivator@gmail.com
+91 8610430657 | +91 8655705865



www.ivators.com