



 **IVATOR[®]**

IVATOR TECHNOLOGIES PVT LTD.

An ISO 9001: 2015 Company

Complete Solution for your vertical elevation

www.ivators.com

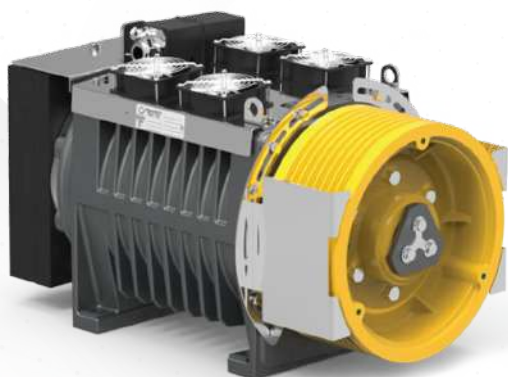
EUROPEAN MACHINE AND AUTOMATIC DOORS

IVATOR®



Montanari Group

GEARLESS & GEARBOX
TRACTION MACHINES



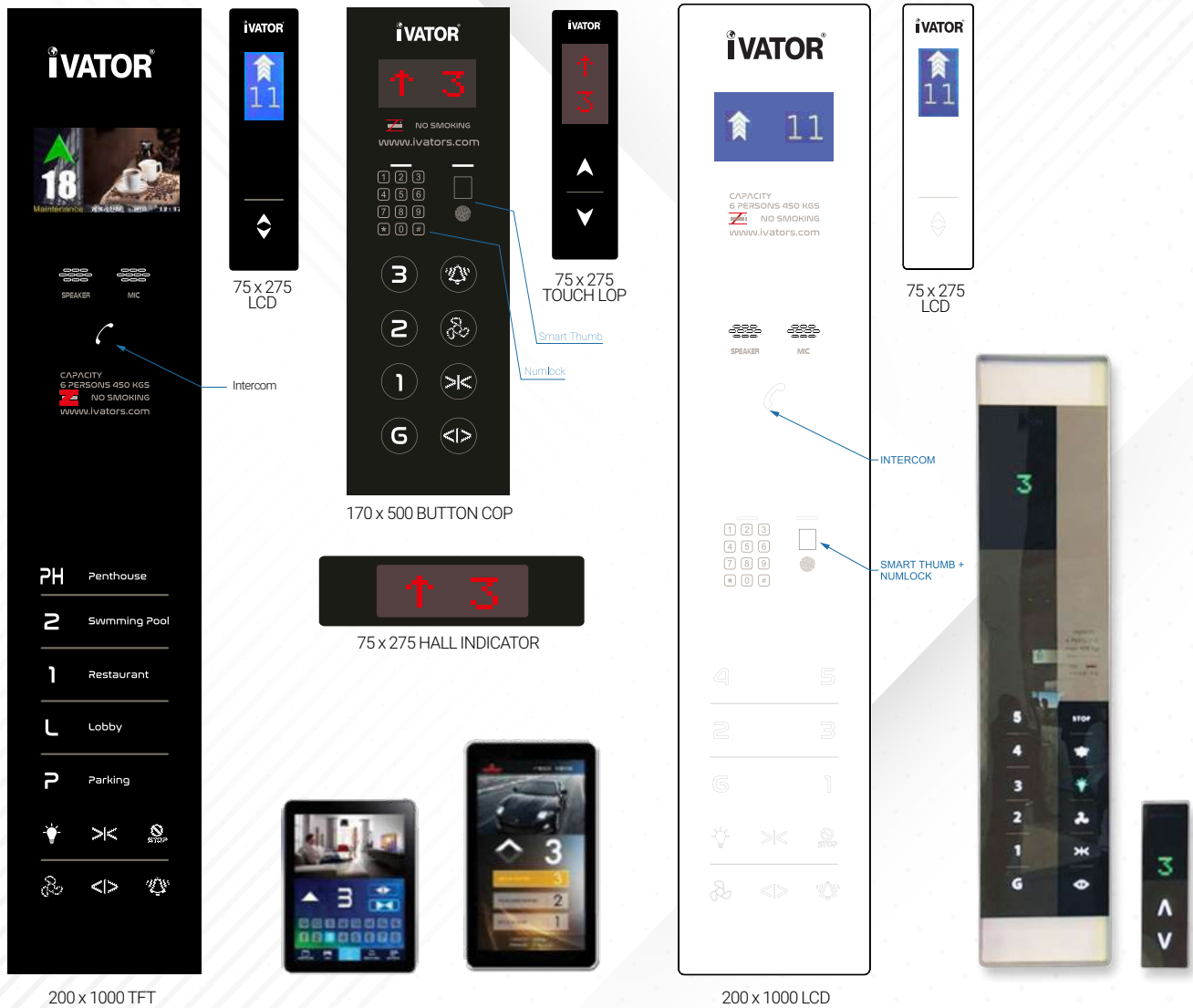
MADE IN GERMANY

Fermator
AUTOMATIC DOORS FOR LIFTS

The automatic doors manufactured by Fermator and Wittur comply with international standards; EN 81-20/50, ASME A17.1, GB 7588 and fire requirements EN 81-58.



TOUCH LOP & COP



OPTIONAL SECURITY FEATURES



Number Lock
Access Card
Fingerprint Lock



iVATOR® provides you premium quality touch COP (Car Operating Panel) LOP (Landing Operating Panel) with great aesthetic look. Available in wall mounted and surface mounted type. Serial / Parallel Dot Matrix/LCD/ TFT/Multimedia displays available with optional security features like Number Lock, RFID access card and Fingerprint Sensor.

Touchless COP and LOP operations.

- Call activation from 20 MM distance.
- It solves the problem of residual bacteria and virus in public equipment.
- No impact of humidity and temperature.

CABIN SERIES STANDARD



»» IV-CS01

Ceiling: Stainless Steel Hairline with spot LED lighting.

Car wall: Stainless Steel Hairline.

Flooring: PVC



Landing Door: Stainless Steel Hairline
304 Grade 1.2mm Thickness



»» IV-CS02



»» IV-CS02



»» IV-CS03

CABIN SERIES PREMIUM



»» IV-CP04



»» IV-CP05



»» IV-CP06



»» IV-CP07



»» IV-CP08



»» IV-CP09



»» IV-CP10



»» IV-CP11



»» IV-CP12



»» IV-CP13



»» IV-CP14



»» IV-CP15



»» IV-CP16



»» IV-CP17



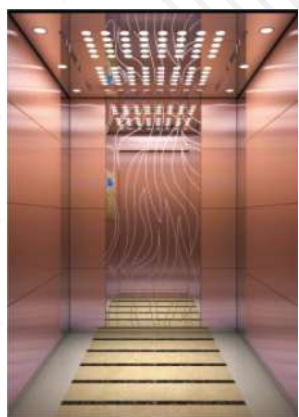
»» IV-CP18



»» IV-CP19



»» IV-CP20



»» IV-CP21



»» IV-CW22



»» IV-CW23



»» IV-CW24



»» IV-CW25



»» IV-CW26



»» IV-CW27



»» IV-CW28



»» IV-CW29



»» IV-CW30

CABIN SERIES

LUXURY



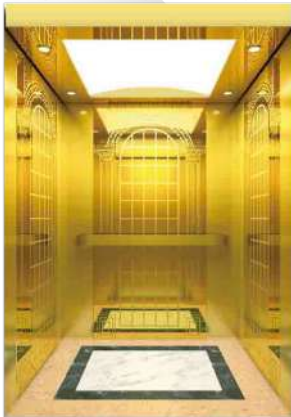
»» IV-CG31



»» IV-CG32



»» IV-CG33



»» IV-CG34



»» IV-CG35



»» IV-CG36



»» IV-CG37



»» IV-CG38



»» IV-CG39



CABIN SERIES *PANORAMIC* ———



»» IV-CV40



»» IV-CV41



»» IV-CV42



»» IV-CV43

CABIN SERIES

CAR LIFT / GOODS LIFT



»» IV-CC44



»» 2 PANEL SIDE OPENING



»» IV-CC45



»» 2 PANEL CENTRE OPENING



»» IV-CC46



»» 4 PANEL CENTRE OPENING



»» IV-CC47



»» 6 PANEL CENTRE OPENING

DOOR SERIES

IVATOR[®]



»» IV-LD01
Stainless Steel Hairline



»» IV-LD02
Stainless Steel Mirror



»» IV-LD03
Stainless Steel Big Vision Glass



»» IV-LD04
Frameless Glass



»» IV-LD05
SS Mirror Eching



»» IV-LD06
SS Mirror Eching



»» IV-LD07
SS Mirror Eching



»» IV-LD08
SS Mirror Eching



»» IV-LD09
SS Mirror Eching



»» IV-LD10



»» IV-LD11



»» IV-LD12



»» IV-LD13



»» IV-LD14



»» IV-LD15



»» IV-LD16



»» IV-LD17



»» IV-LD18



»» IV-LD19



»» IV-LD20



»» IV-LD21



»» IV-LD22



»» IV-LD23



»» IV-LD24



»» IV-LD25



»» IV-LD26



»» IV-LD27



»» IV-LD28



»» IV-LD29



»» IV-LD30



»» IV-LD31



»» IV-LD32



»» IV-LD33



»» IV-LD34



»» IV-LD35



»» IV-LD36

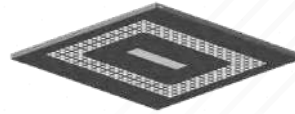
CEILING SERIES



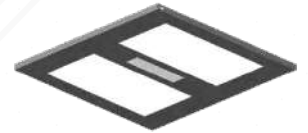
»» IV-FC01



»» IV-FC02



»» IV-FC03



»» IV-FC04



»» IV-FC05



»» IV-FC06



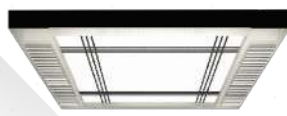
»» IV-FC07



»» IV-FC08



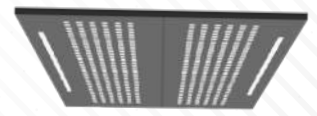
»» IV-FC09



»» IV-FC10



»» IV-FC11



»» IV-FC12



»» IV-FC13



»» IV-FC14



»» IV-FC15



»» IV-FC16



»» IV-FC17



»» IV-FC18



»» IV-FC19



»» IV-FC20



»» IV-FC21



»» IV-FC22



»» IV-FC23



»» IV-FC24

FLOORING SERIES



»» IV-F01



»» IV-F02



»» IV-F03



»» IV-F04



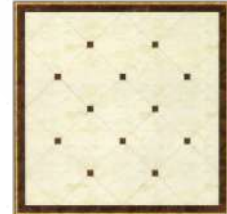
»» IV-F05



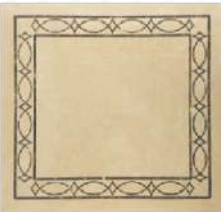
»» IV-F06



»» IV-F07



»» IV-F08



»» IV-F09



»» IV-F10



»» IV-F11



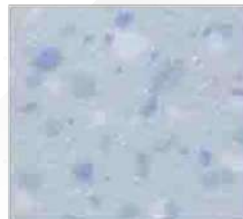
»» IV-F12



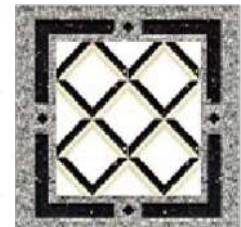
»» IV-F13



»» IV-F14



»» IV-F15



»» IV-F16

HANDRAIL SERIES

»» IV-H01



»» IV-H02



»» IV-H03



»» IV-H04



»» IV-H05



»» IV-H06



Note: There might be Slightly difference between graphical image samples and real products. Images are only for reference, for final please follow drawing and contract. Above flooring images are PVC make, Optional Marble/Granite are client scope.